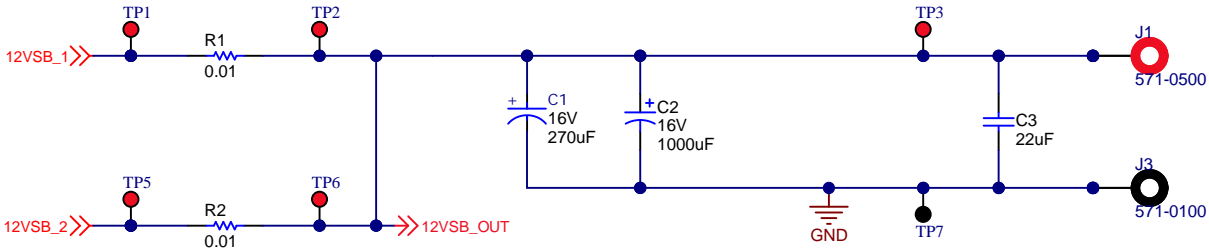
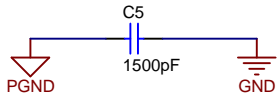
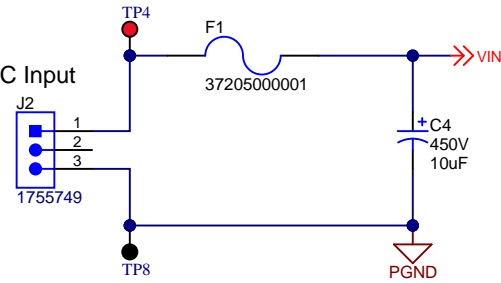
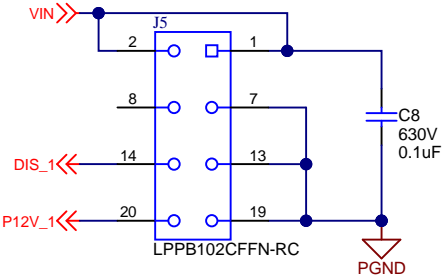


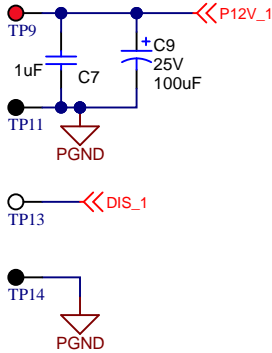
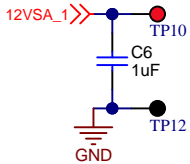
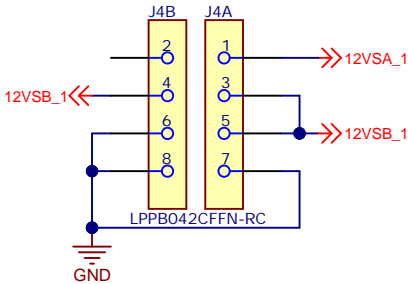
80VDC-400VDC Input



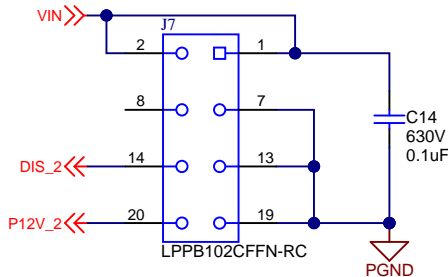
Primary Connections



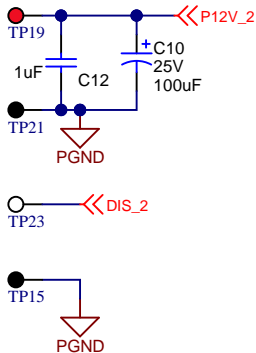
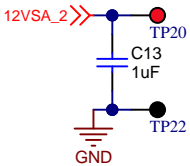
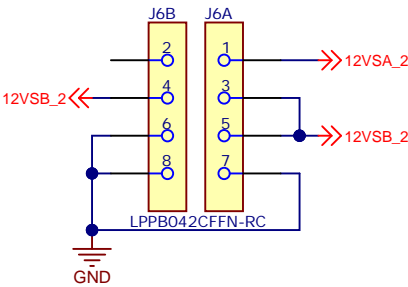
Secondary Connections



Primary Connections



Secondary Connections



PRELIMINARY

PCB Number: PMP23169
PCB Rev: B

Texas Instruments and/or its licensors do not warrant the accuracy or completeness of this specification or any information contained therein. Texas Instruments and/or its licensors do not warrant that this design will meet the specifications, will be suitable for your application or fit for any particular purpose, or will operate in an implementation. Texas Instruments and/or its licensors do not warrant that the design is production worthy. You should completely validate and test your design implementation to confirm the system functionality for your application.

Orderable: ChangeMe in variant	Designed for: Tester board for PMP23146	Mod. Date: 9/21/2022
TID #: N/A	Project Title: Tester board for PMP23146	
Number: PMP23169	Rev: B	Sheet Title:
SVN Rev: Not in version control	Assembly Variant: 001	Sheet: 1 of 1
Drawn By: B King	File: PMP23169 Rev B.SchDoc	Size: B
Engineer: B King	Contact: http://www.ti.com/support	

